

# WHERE ARE WE NOW?

## 2015 YOUTH RISK BEHAVIOR SURVEY RESULTS

Jonathan Stewart  
Franklin High School  
March 25, 2016

Franklin Mayor's  
**DRUG TASK FORCE**



*Turning on the Power of Prevention  
in the Franklin-Hill Community*



# OBJECTIVES

- Increase awareness of youth substance use rates in the Franklin community as observed in the 2009-2015 Youth Risk Behavior Survey (YRBS) findings.
- Improve understanding of the relationships between substance misuse behaviors, other health risk behaviors and protective factors.

# WHAT THE YRBS IS AND IS NOT

- It is **valid and reliable**. It has been tested multiple times. Findings are consistent with other survey findings.
- It is a **tool** to increase awareness, improve understanding and can be used for **positive changes**.
- Data reflects **community perceptions and behaviors**; the school is simply a place where it is administered.
- It is **not** a “report card” of the school.
- It does **not encourage use** of substances or other unhealthy behaviors.

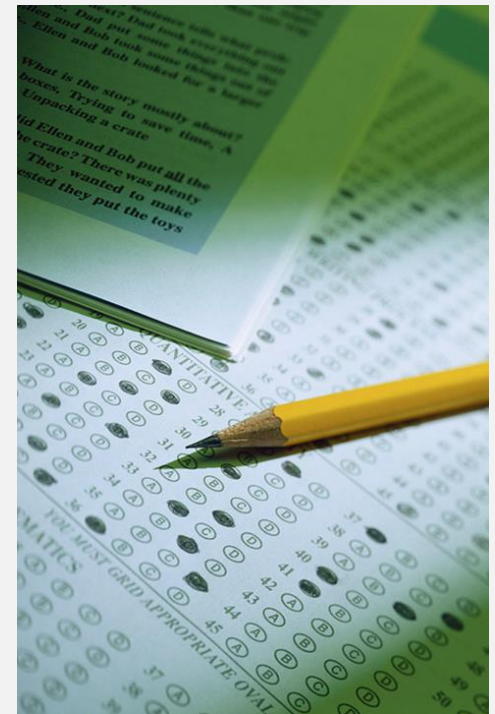
# 2015 YRBS RESPONDENT SAMPLE

FRANKLIN HIGH SCHOOL Respondent Sample	
Responses	Percentage of Students
Completed Surveys	271
Total School Enrollment	392
Response Rate	<b>69.1%</b>
<b>Grade Distribution (n=231)</b>	
9 <sup>th</sup>	74 (27.5%)
10 <sup>th</sup>	73 (27.1%)
11 <sup>th</sup>	62 (23.0%)
12 <sup>th</sup>	60 (22.3%)
<b>Gender Distribution (n=231)</b>	
Female	142 (52.8%)
Male	127 (47.2%)

# TRENDS IN SUBSTANCE USE 2009-2015

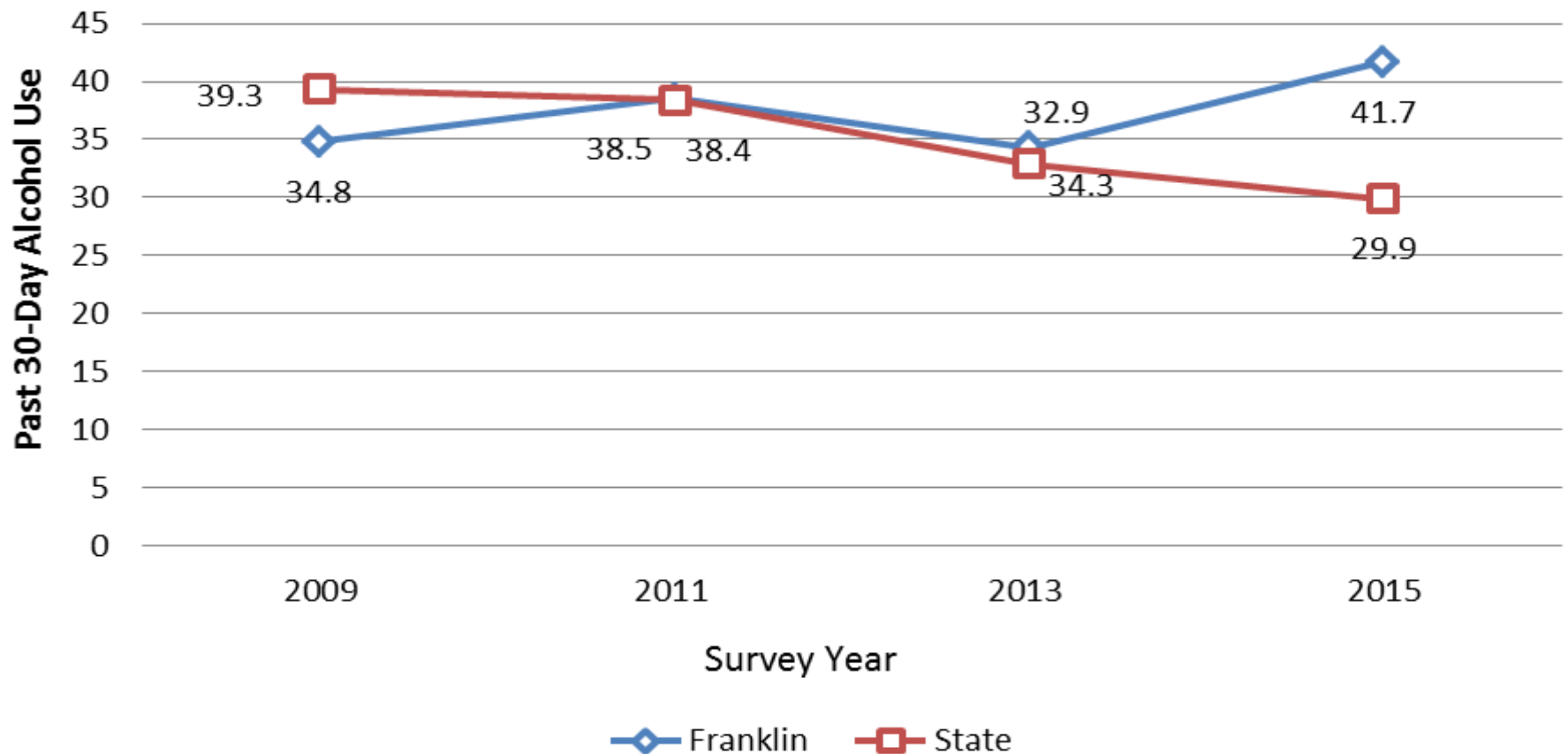
## FRANKLIN AND THE STATE

- Past 30-Day Alcohol Use
- Past 30-Day Binge Drinking
- Past 30-Day Marijuana Use
- Past 30-Day Prescription Drug Use
- Lifetime Heroin Use



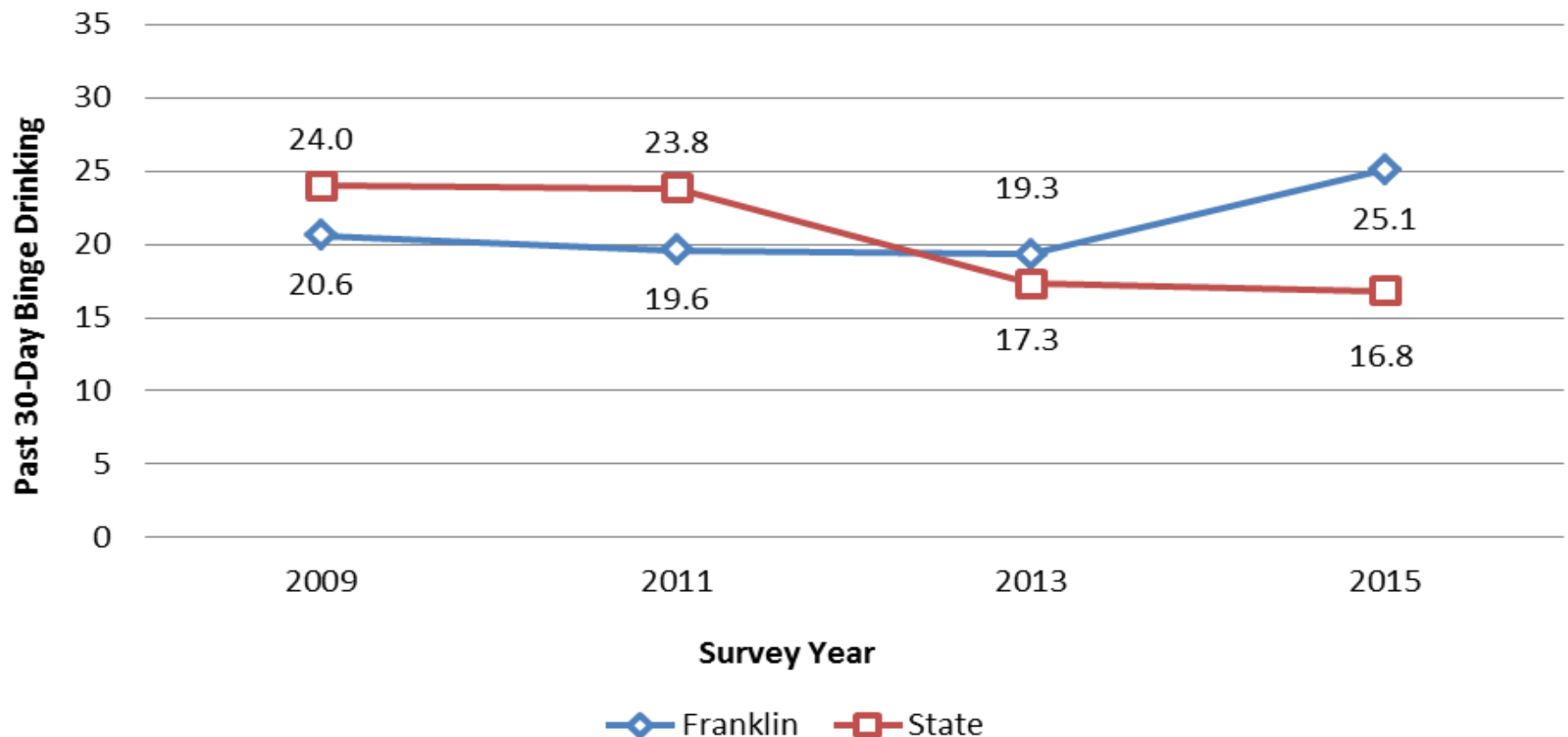
# PAST 30-DAY ALCOHOL USE

**% of High School Aged Youth Who Reported Drinking Alcohol in the Past 30 Days**



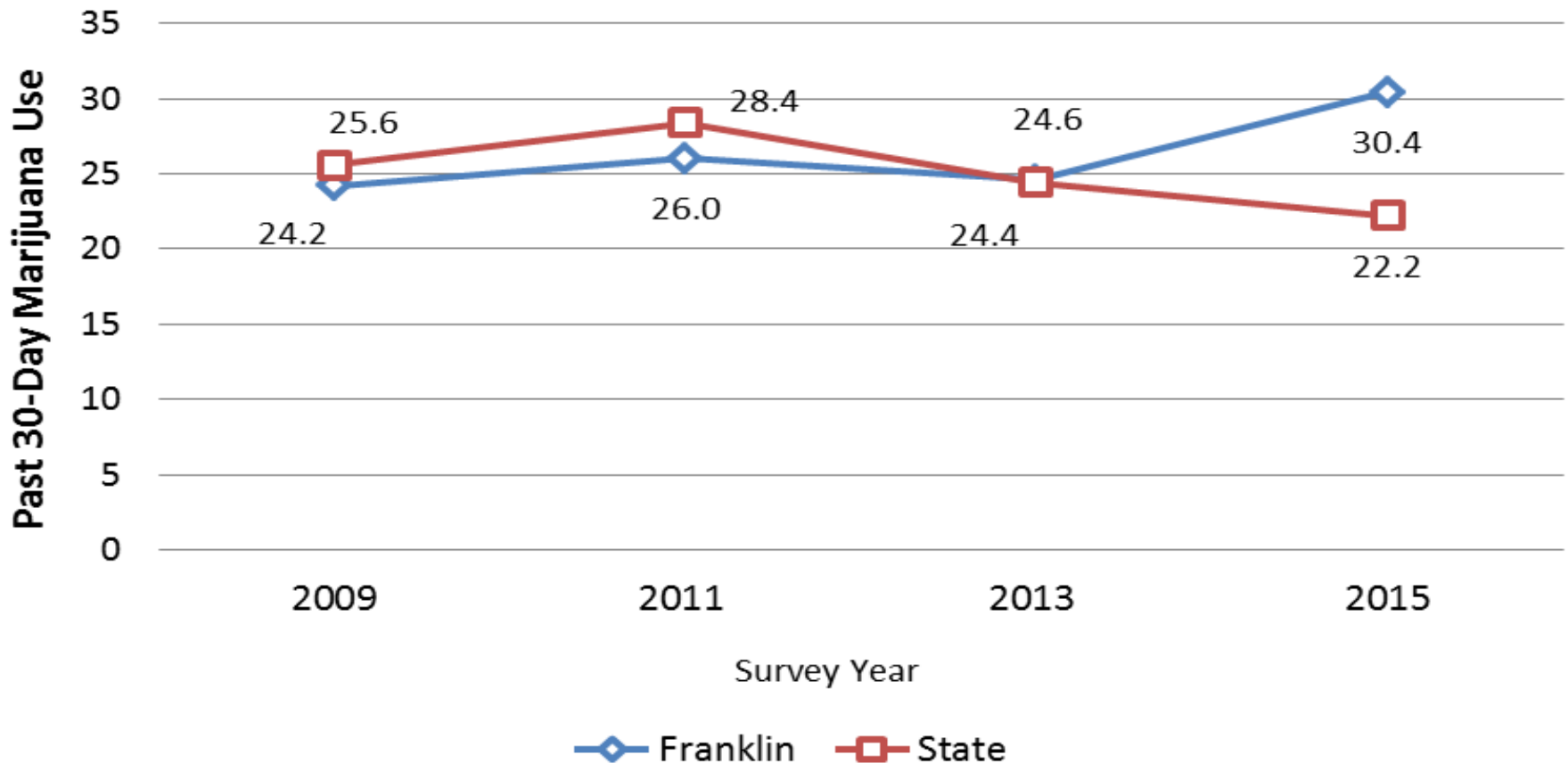
# PAST 30-DAY BINGE DRINKING

**% of High School Aged Youth Who Reported Having 5 or More Drinks in a Row in the Past 30 Days**



# PAST 30-DAY MARIJUANA USE

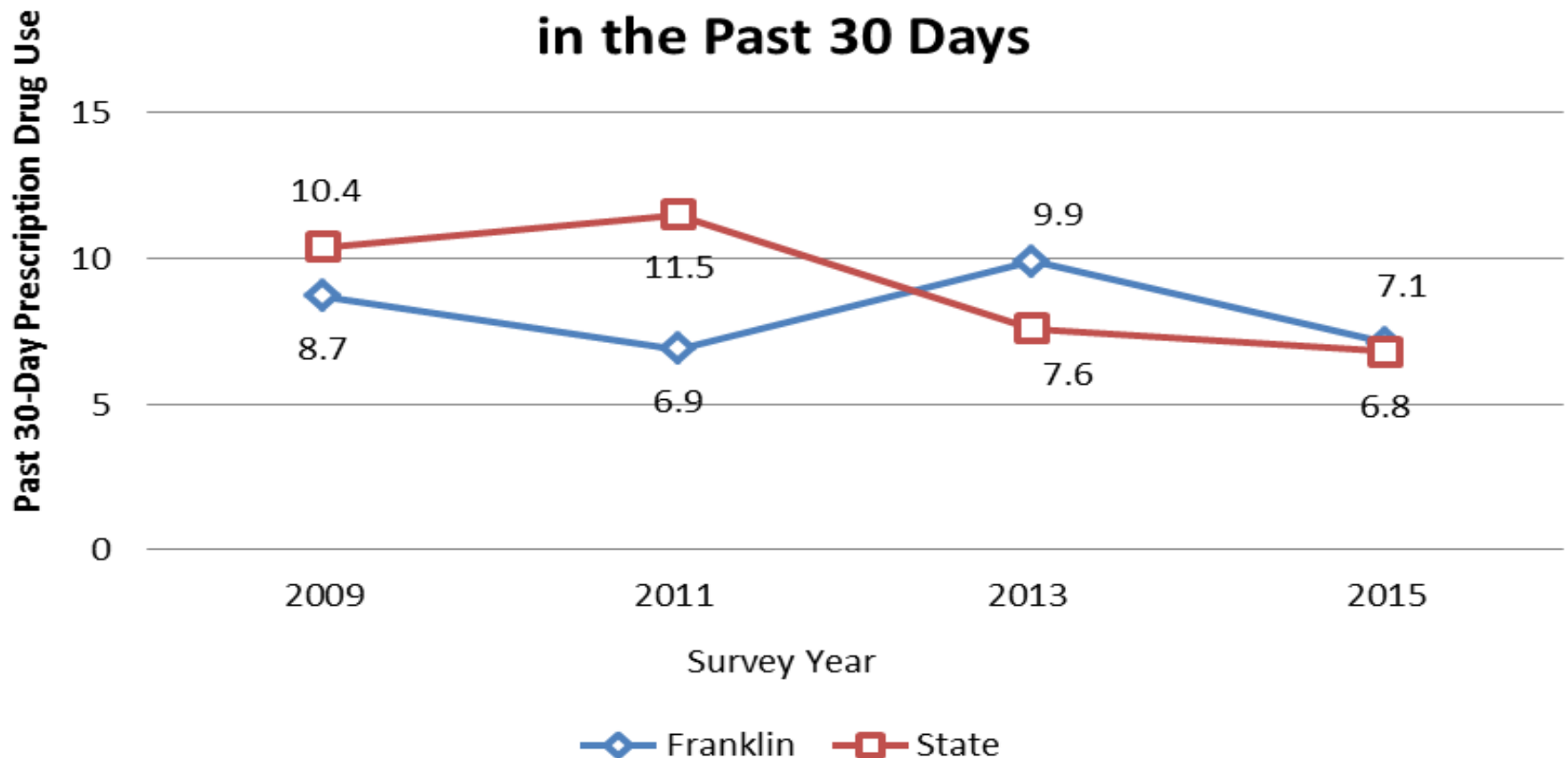
**% of High School Aged Youth Who Reported Using Marijuana in the Past 30 Days**





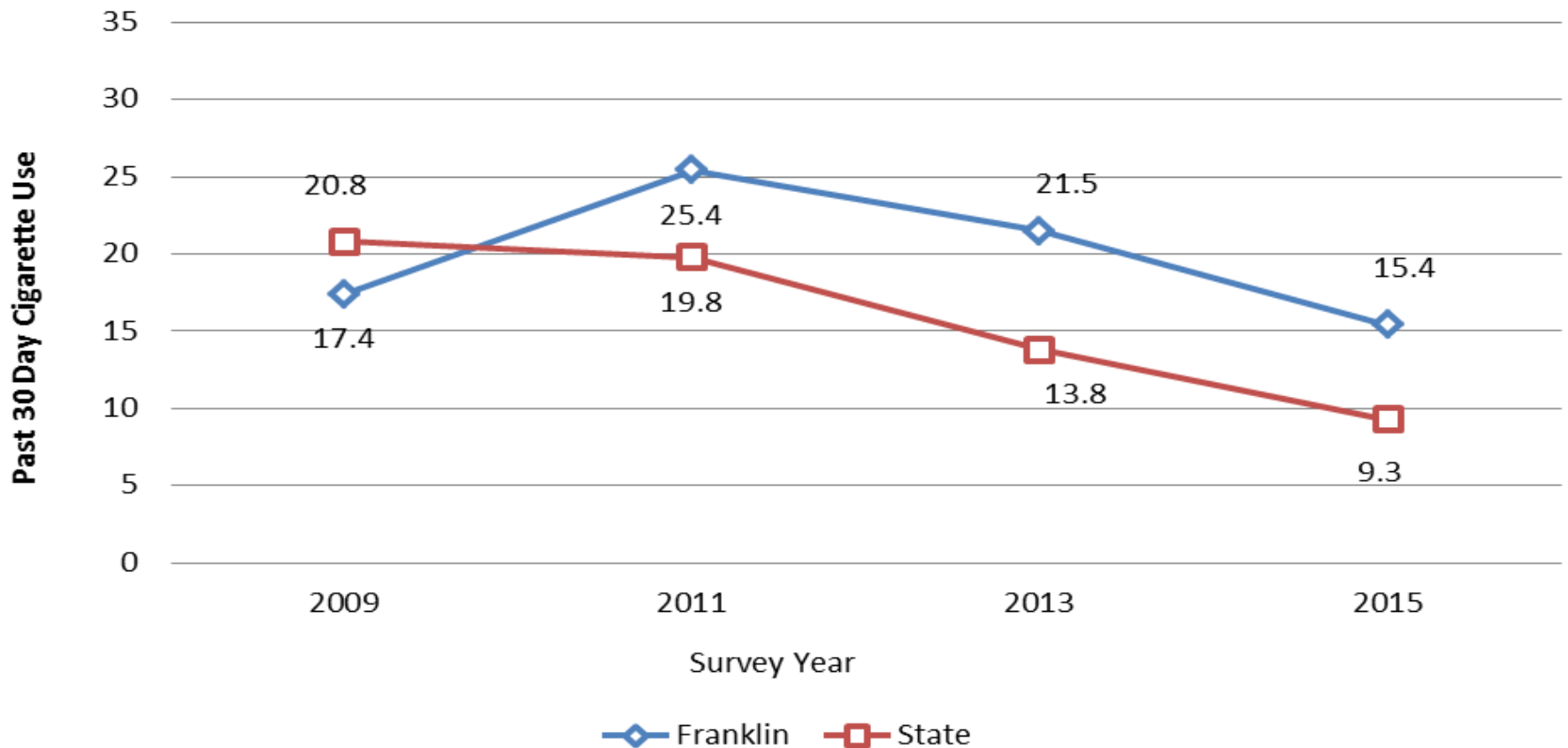
# PAST 30-DAY PRESCRIPTION DRUG MISUSE

## % of High School Aged Youth who Reported Using Rx Drugs Without a Doctor's Rx in the Past 30 Days



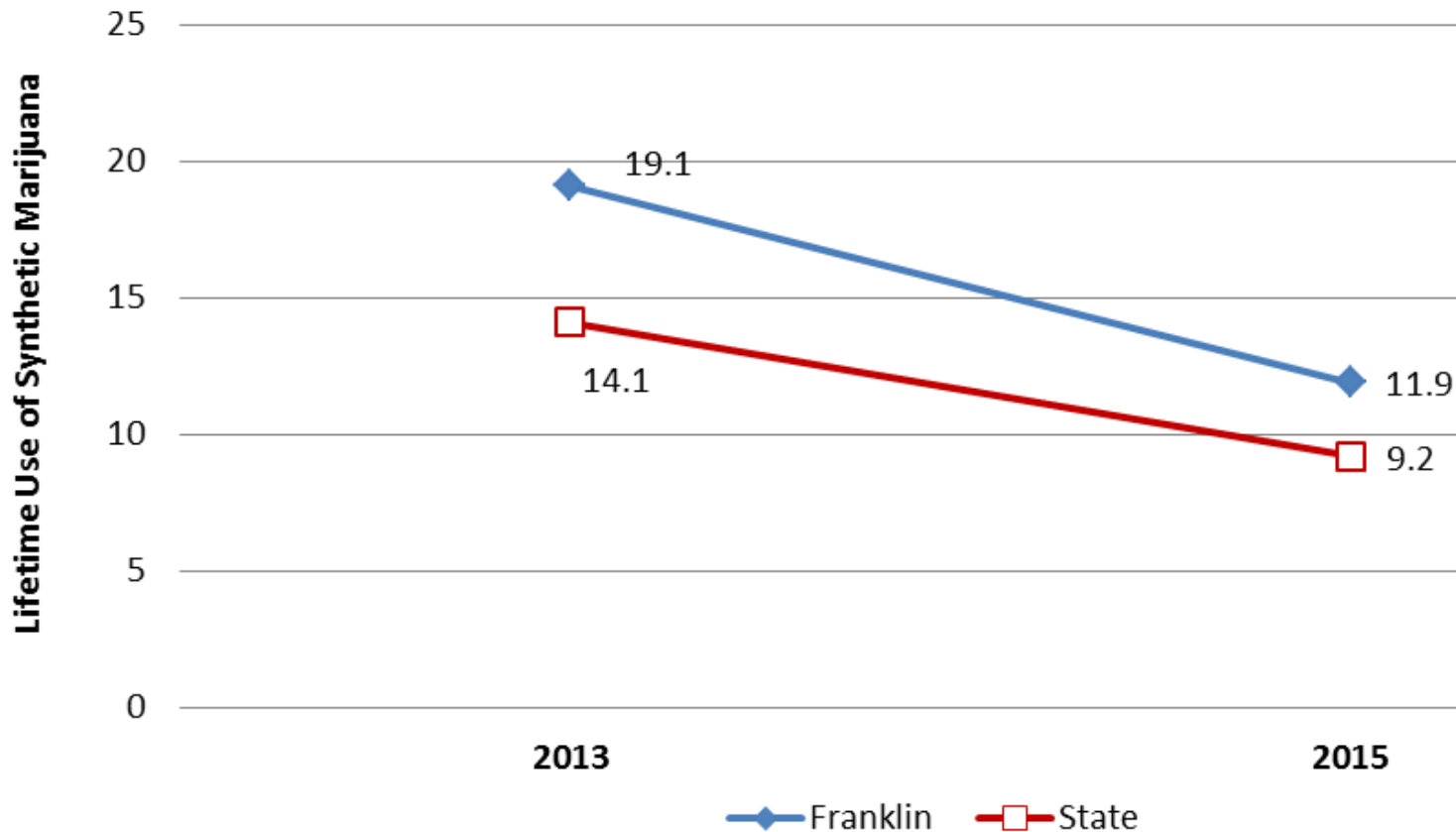
# TOBACCO USE

**% of High School Aged Youth who Reported Smoking Cigarettes in the Past 30 Days**



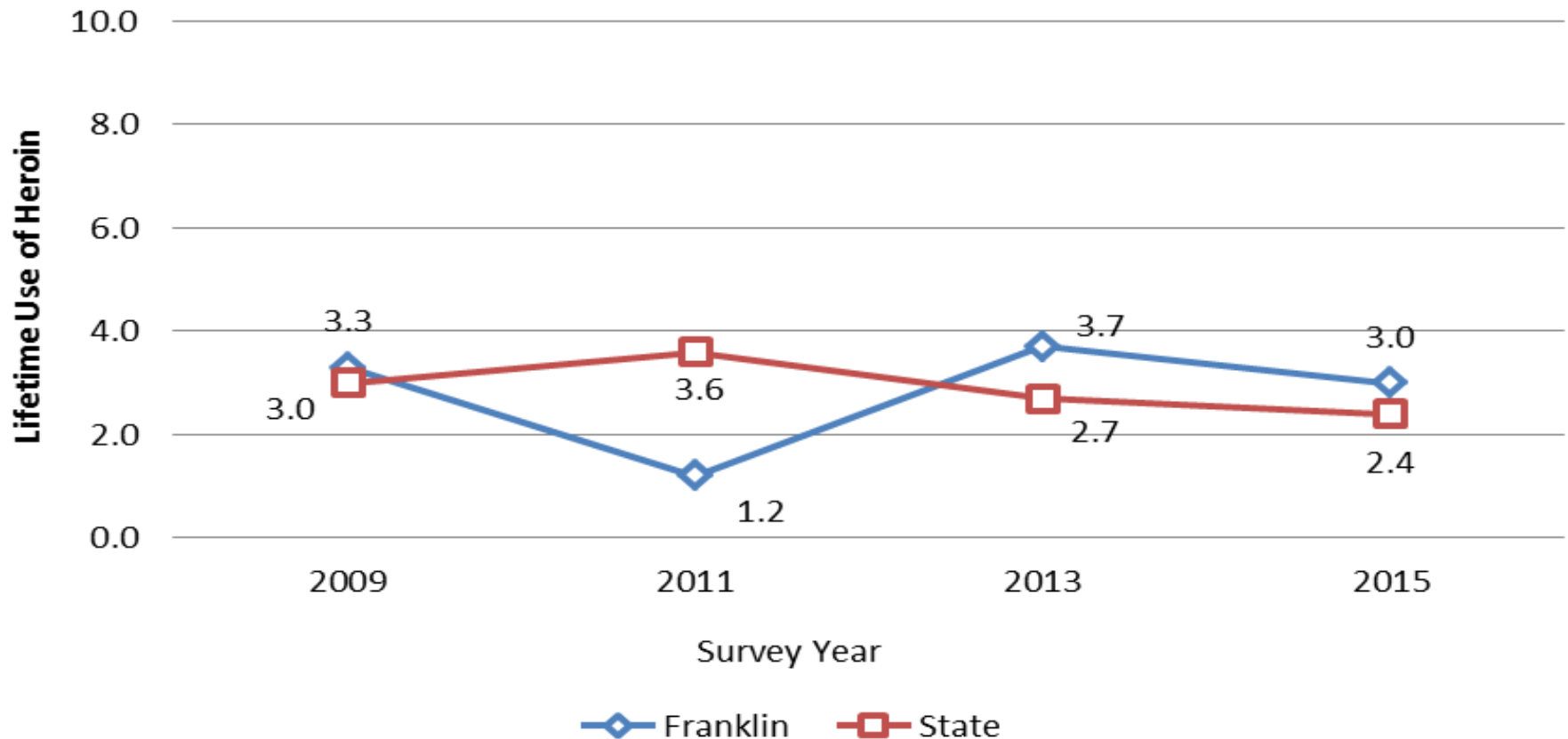
# LIFETIME USE OF SYNTHETIC MARIJUANA

**% of High School Aged Youth who Reported Using Synthetic Marijuana One or More Times During Their Life**



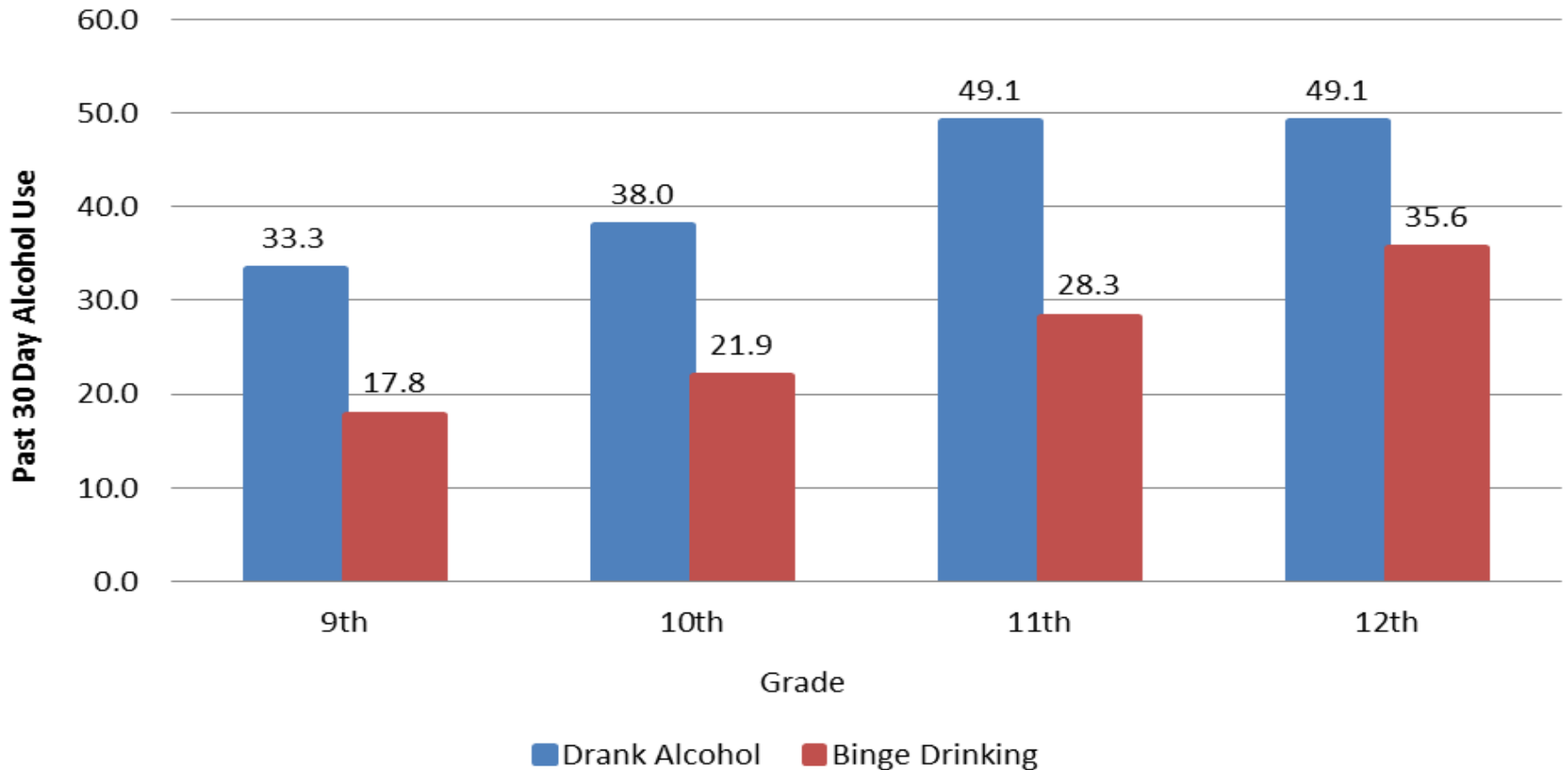
# LIFETIME HEROIN USE

**% of High School Aged Youth Who Reported Using Heroin One or More Times During Their Life**



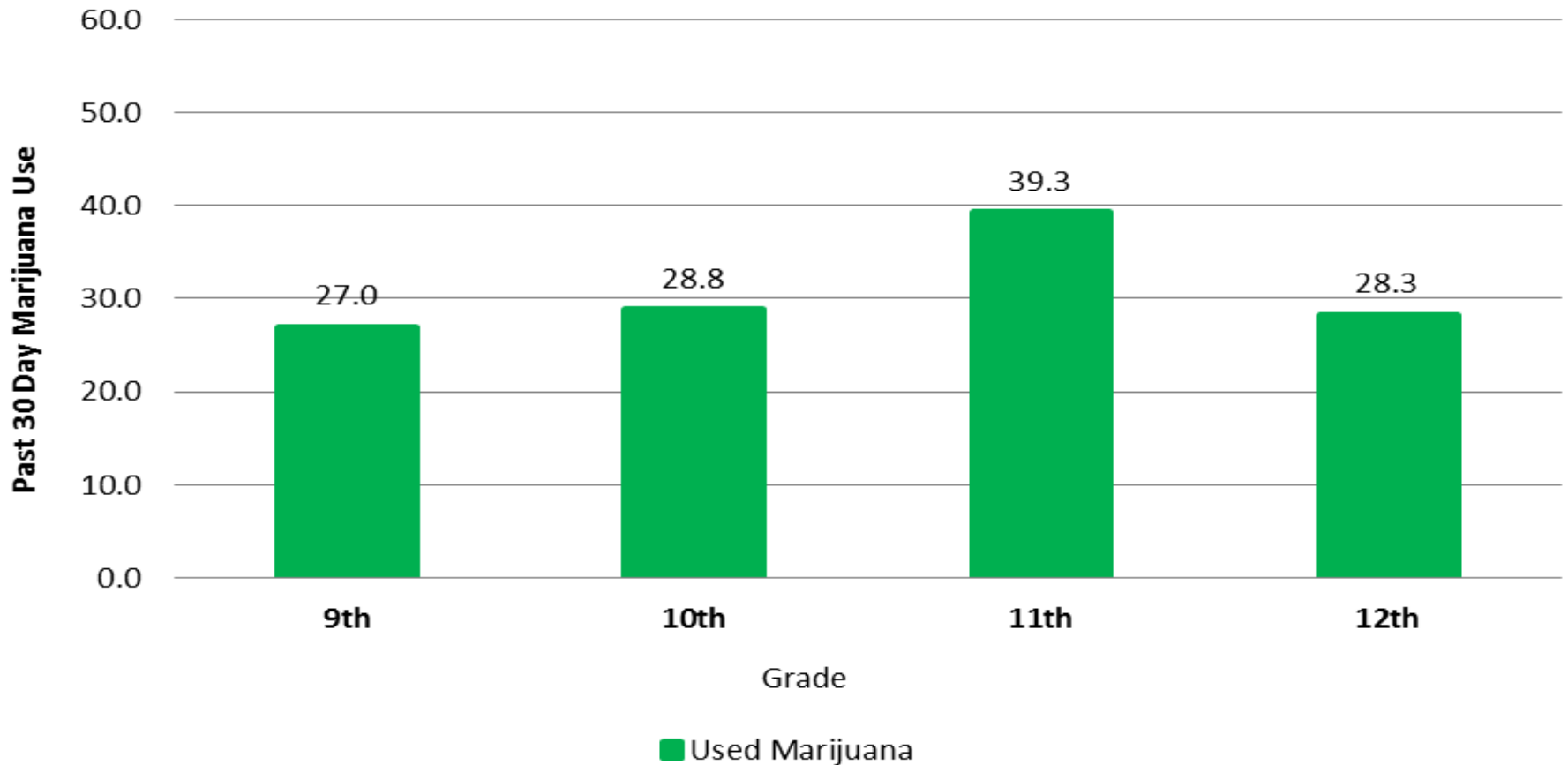
# PAST 30 DAY ALCOHOL USE, BY GRADE

**Alcohol Use in the Past 30 Days by Grade**



# PAST 30 DAY MARIJUANA USE, BY GRADE

**Marijuana Use in the Past 30 Days by Grade**

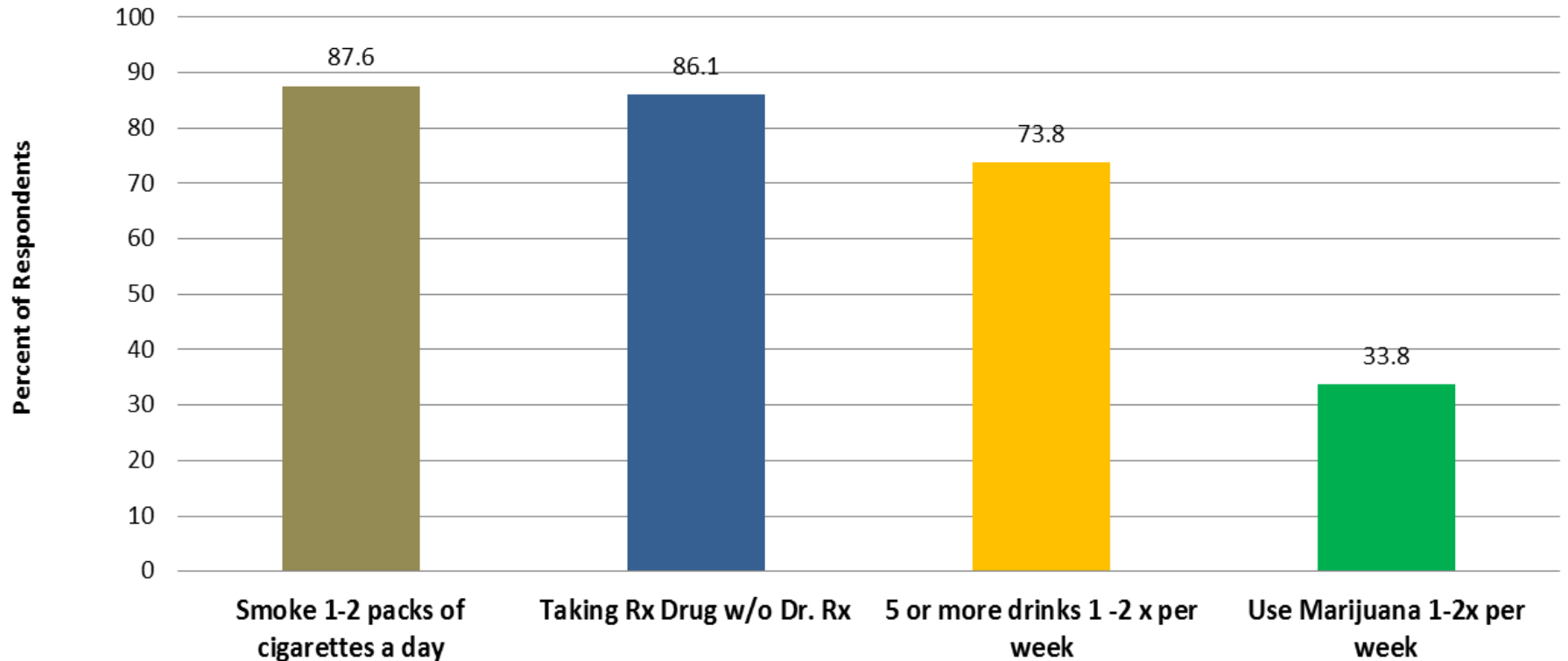


# Individuals & Peers



# PERCEPTION OF RISK

## % of High School Aged Youth Who Perceive Moderate or Great Risk of Harm

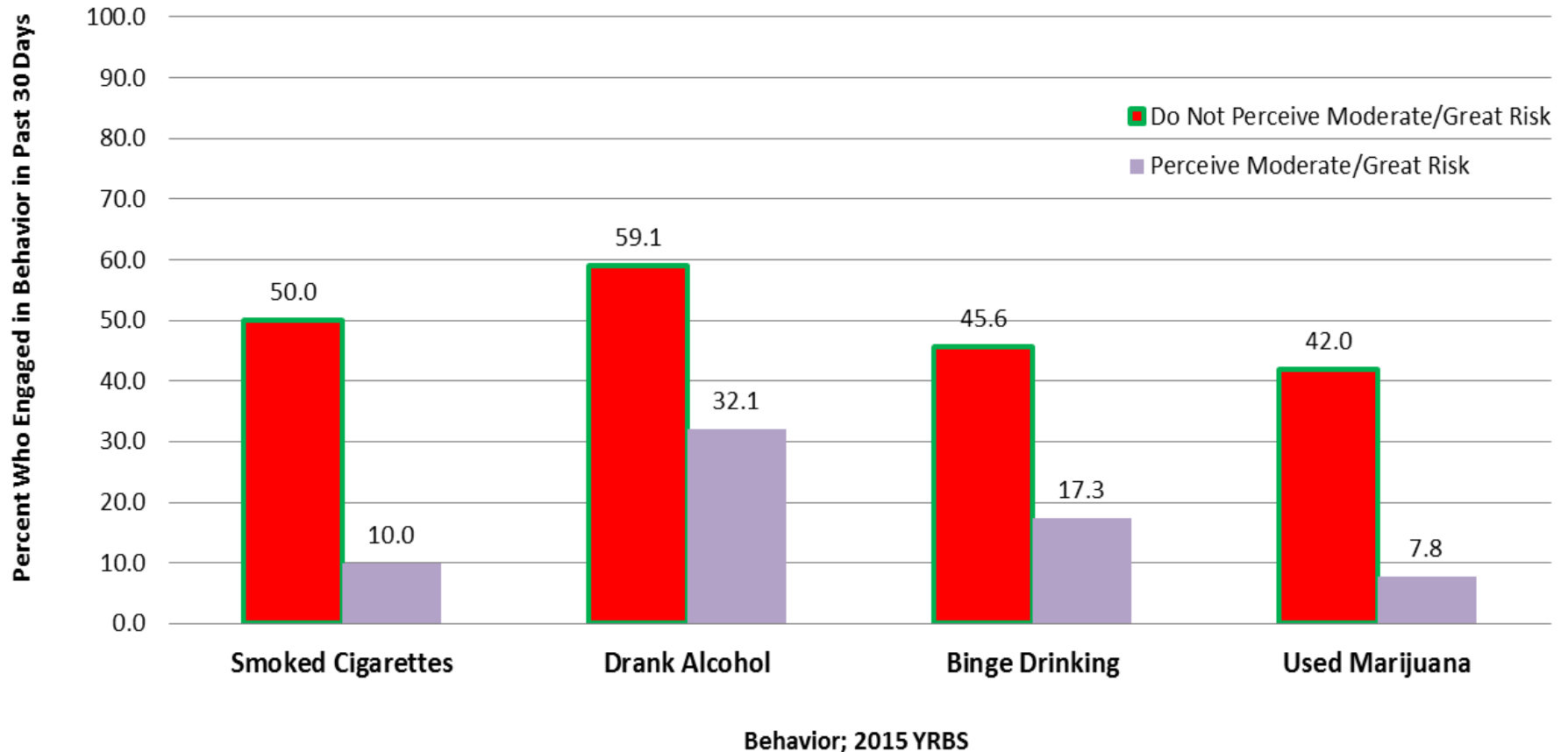


Behavior; 2015 YRBS



# PERCEPTION OF RISK OF HARM BY SUBSTANCE USE

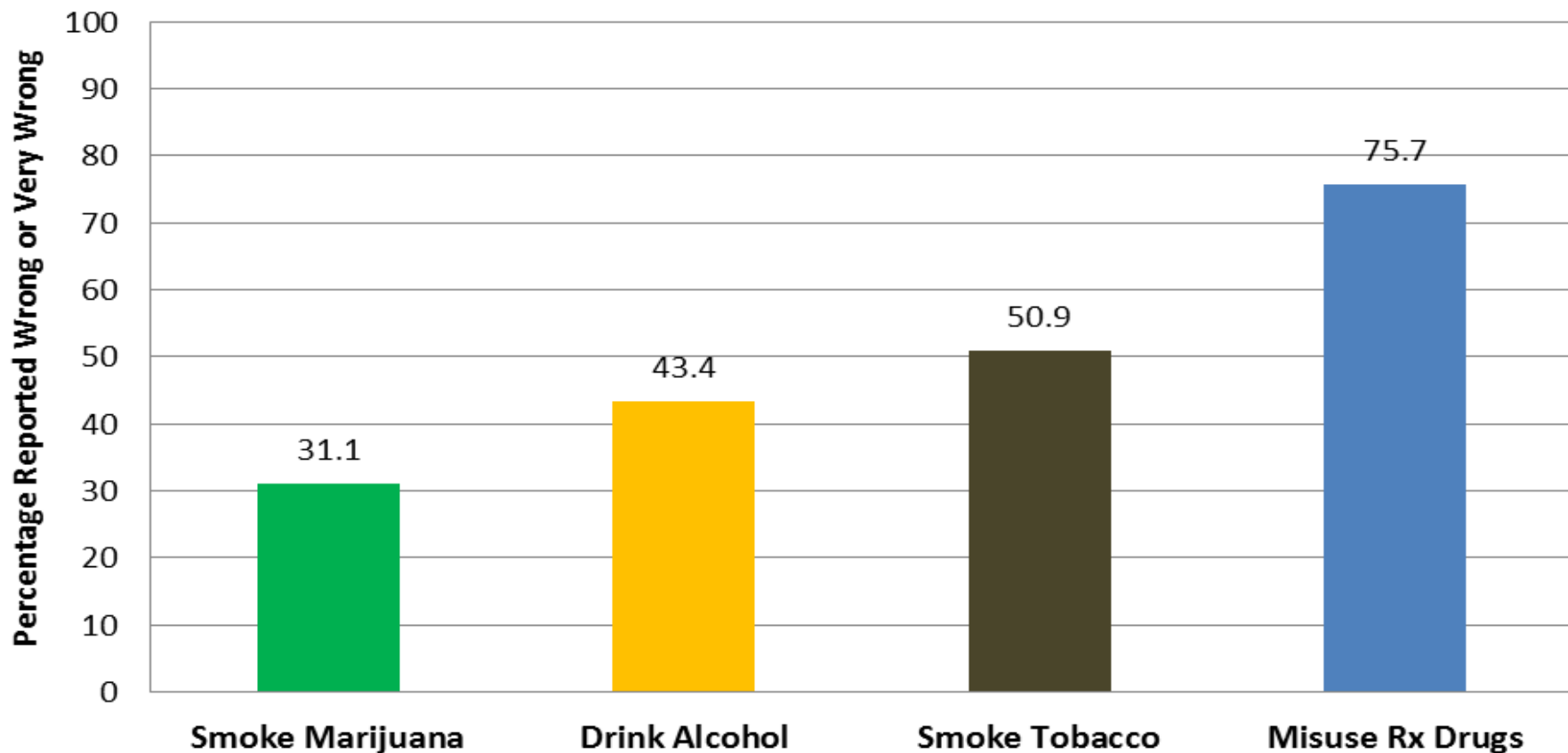
**Relationship Between Perception of Risk and Risk Behavior**



# PERCEPTION OF PEER DISAPPROVAL

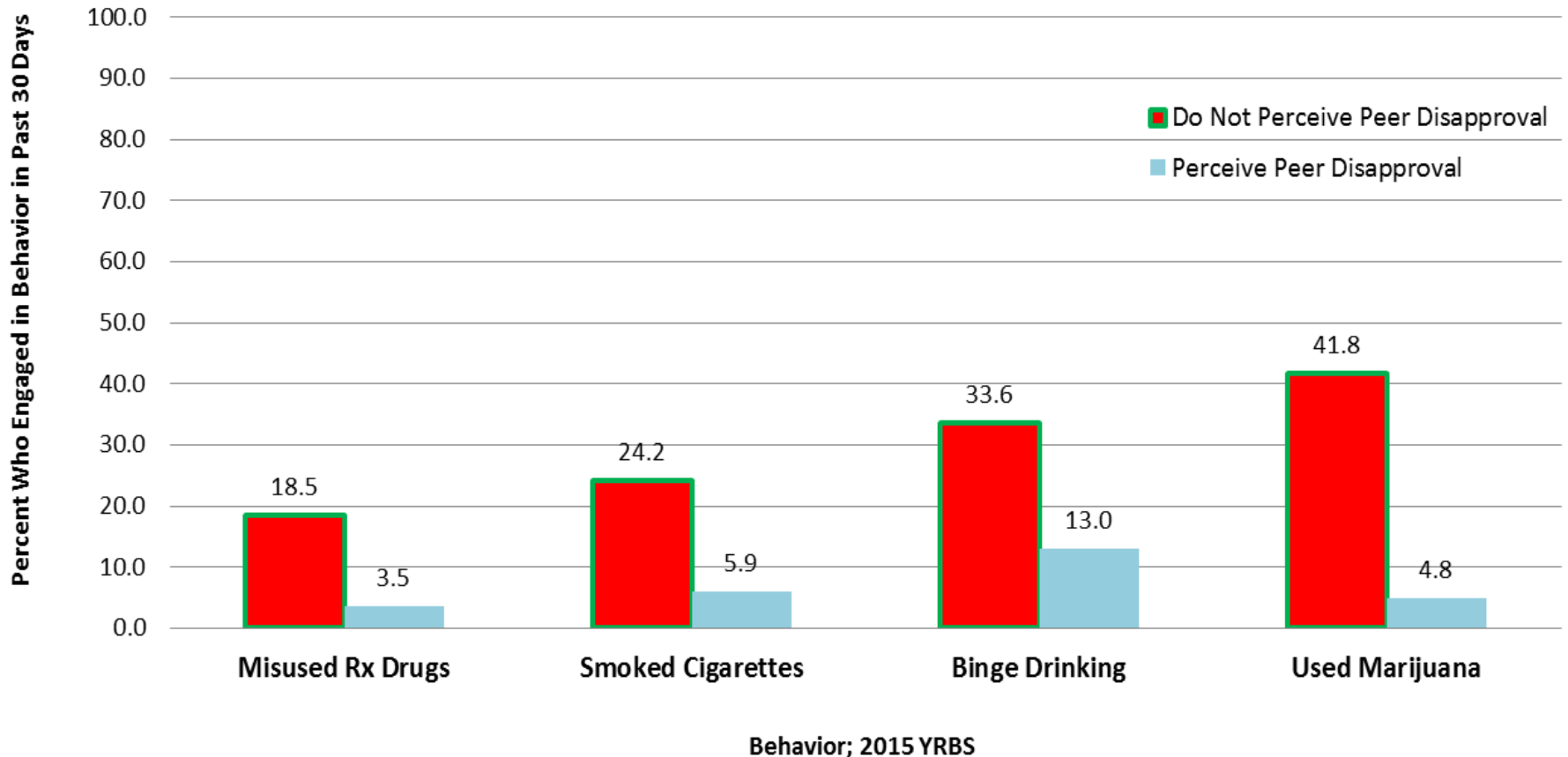
## 2015 YRBS

**Percentage of High School Aged Youth that Reported Their Friends Feel it is Wrong or Very Wrong to:**



# PEER DISAPPROVAL AND SUBSTANCE USE

**Relationship Between Peer Disapproval and Risk Behavior**



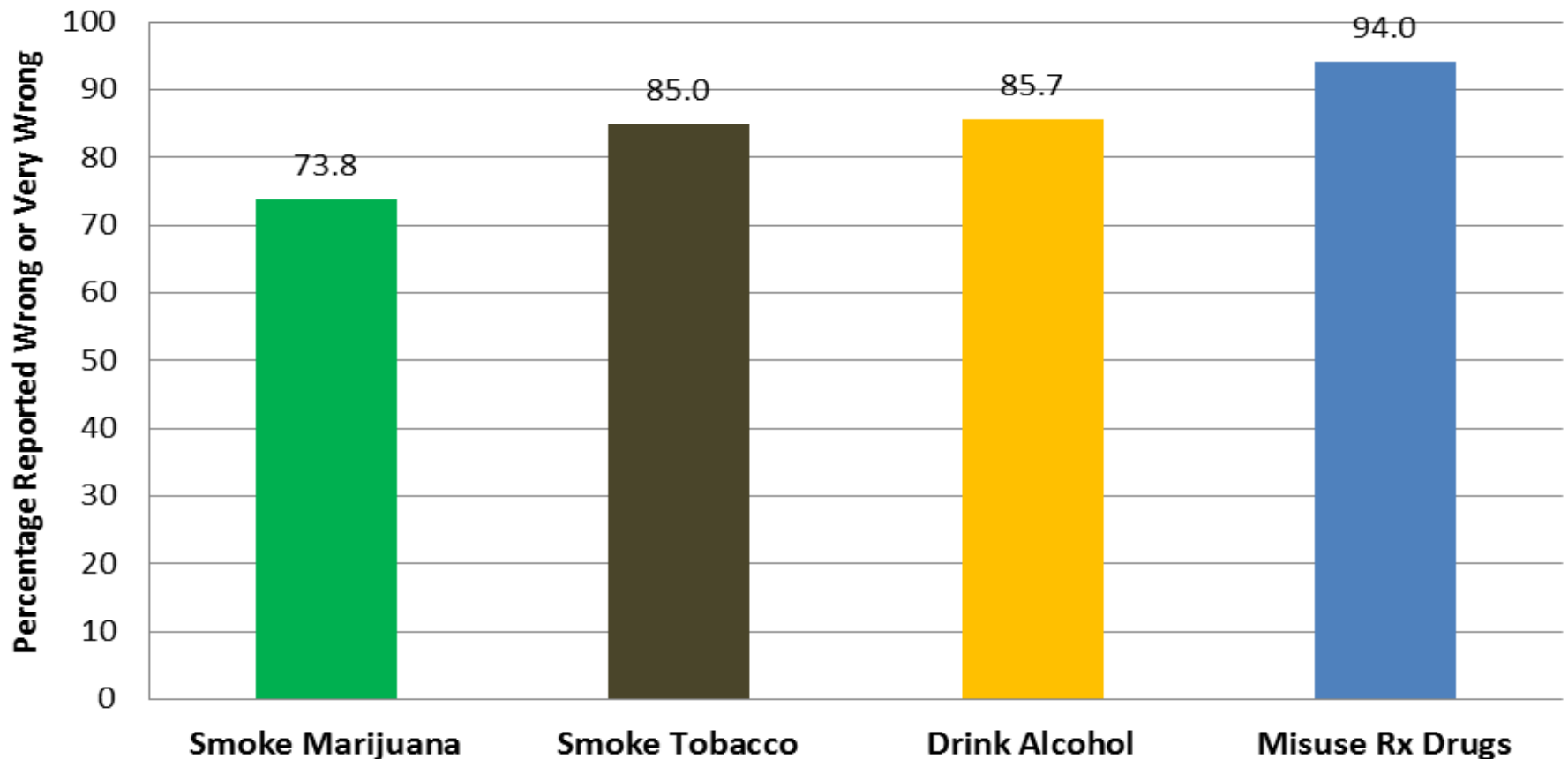


FAMILY

# PERCEPTION OF PARENT DISAPPROVAL

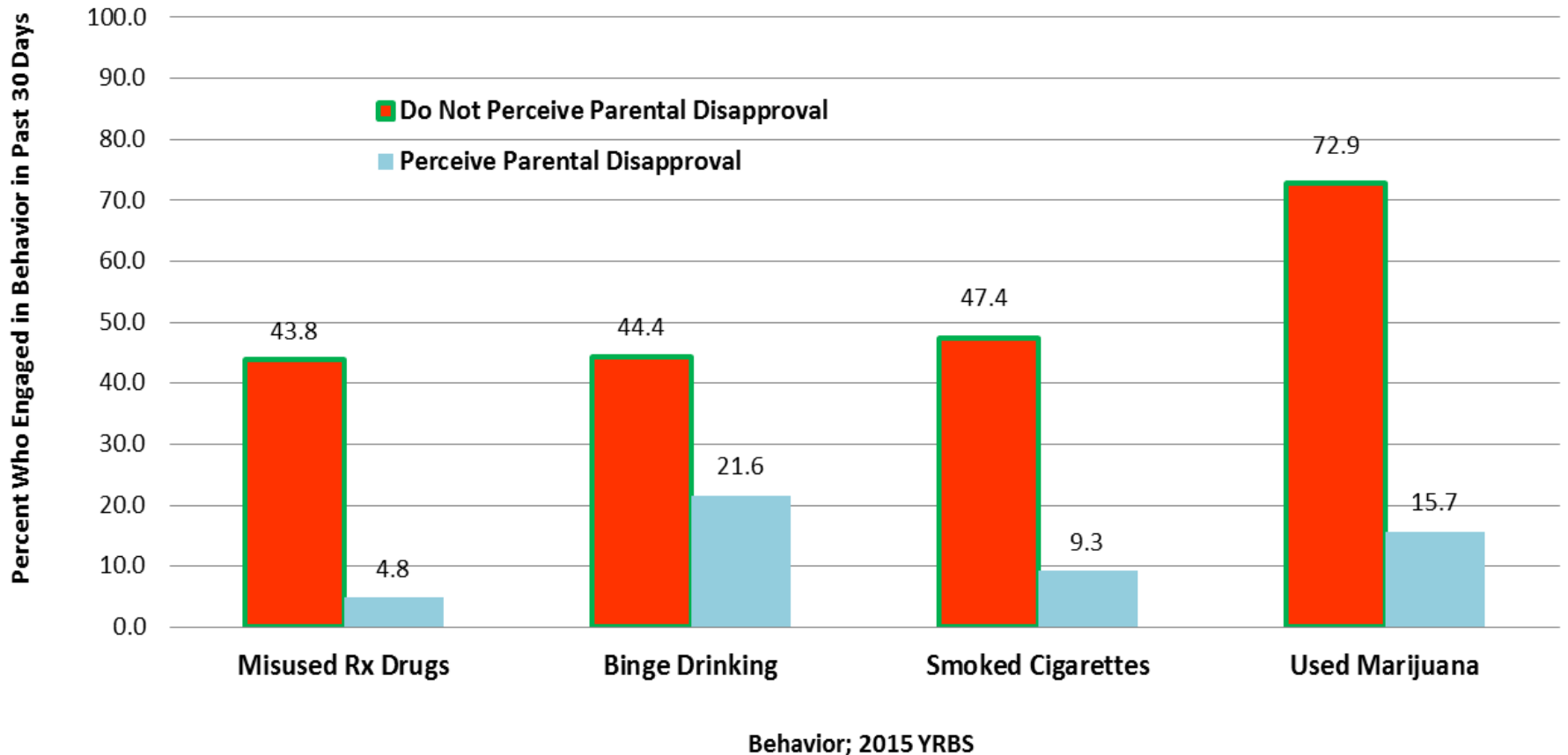
## 2015 YRBS

**Percentage of High School Aged Youth that Reported Their Parents Feel it is Wrong or Very Wrong to:**



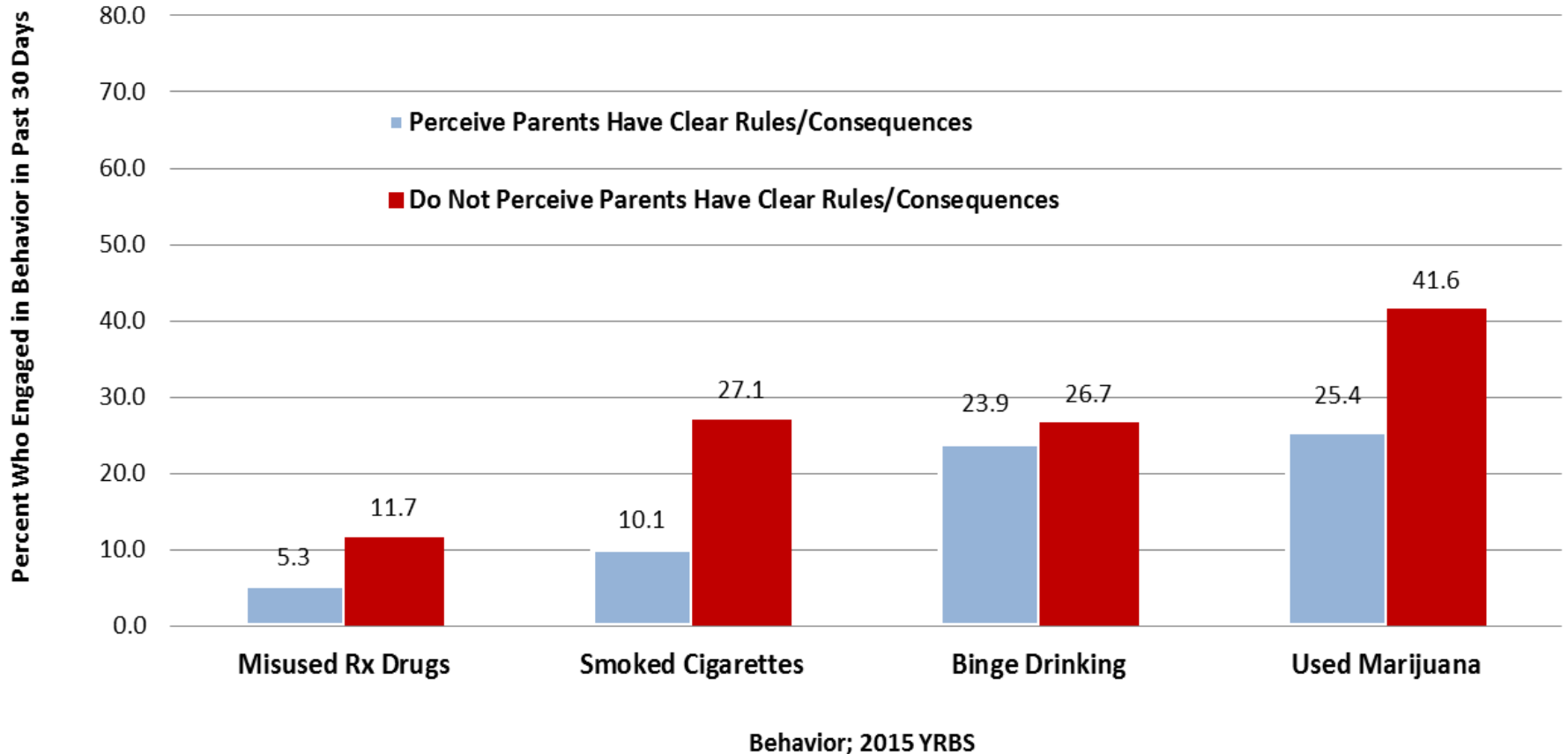
# PARENT DISAPPROVAL AND SUBSTANCE USE

**Relationship Between Parental Disapproval and Risk Behavior**



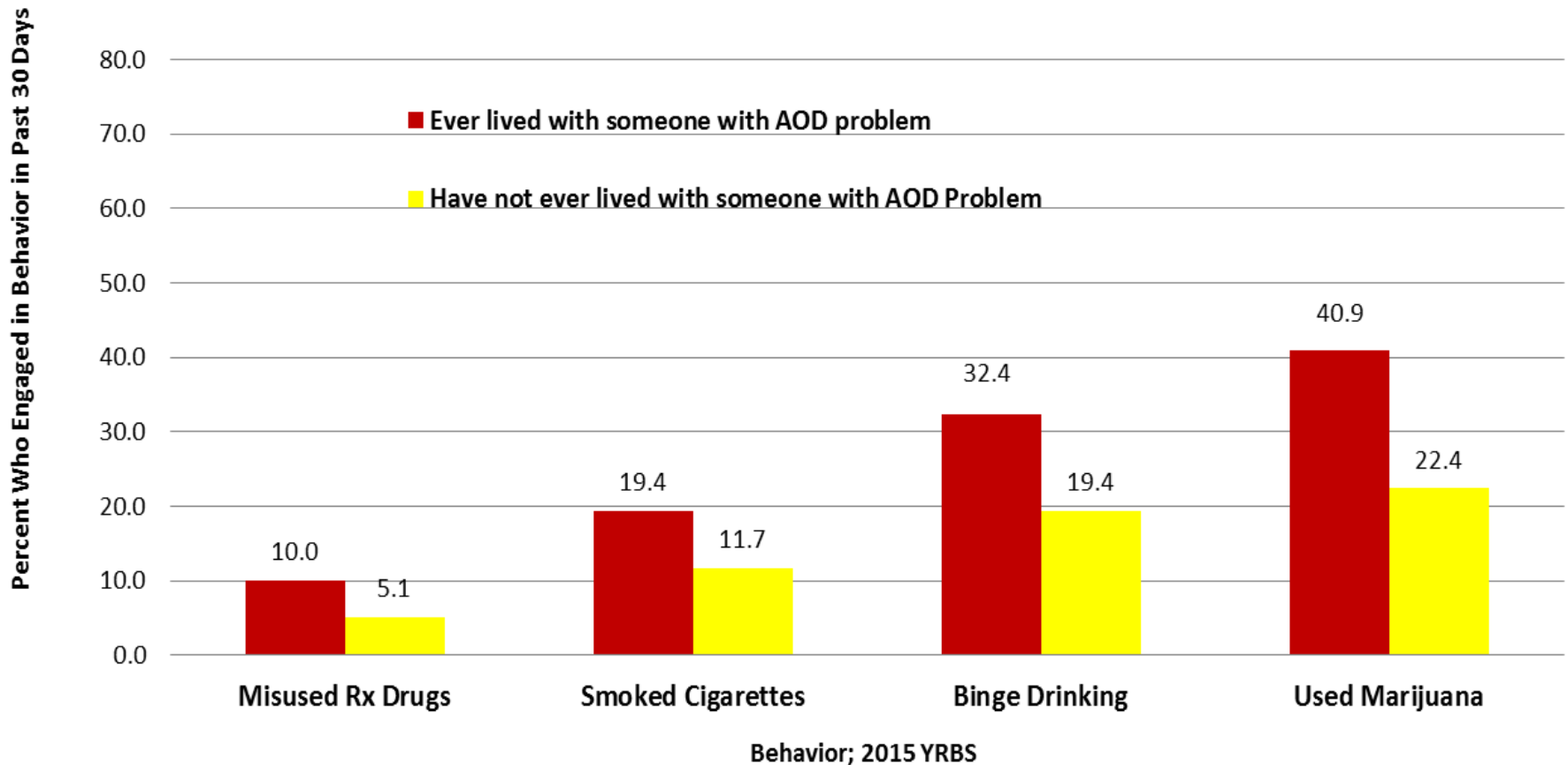
# PARENT CONSEQUENCES AND SUBSTANCE USE

**Relationship Between Perception that Parents Have Clear Rules/Consequences for Behavior and Risk Behavior**



# EXPOSURE TO FAMILY AOD PROBLEMS AND SUBSTANCE USE

**Relationship Between Family History of Alcohol or Other Drug Problems  
and Substance Use Behavior**



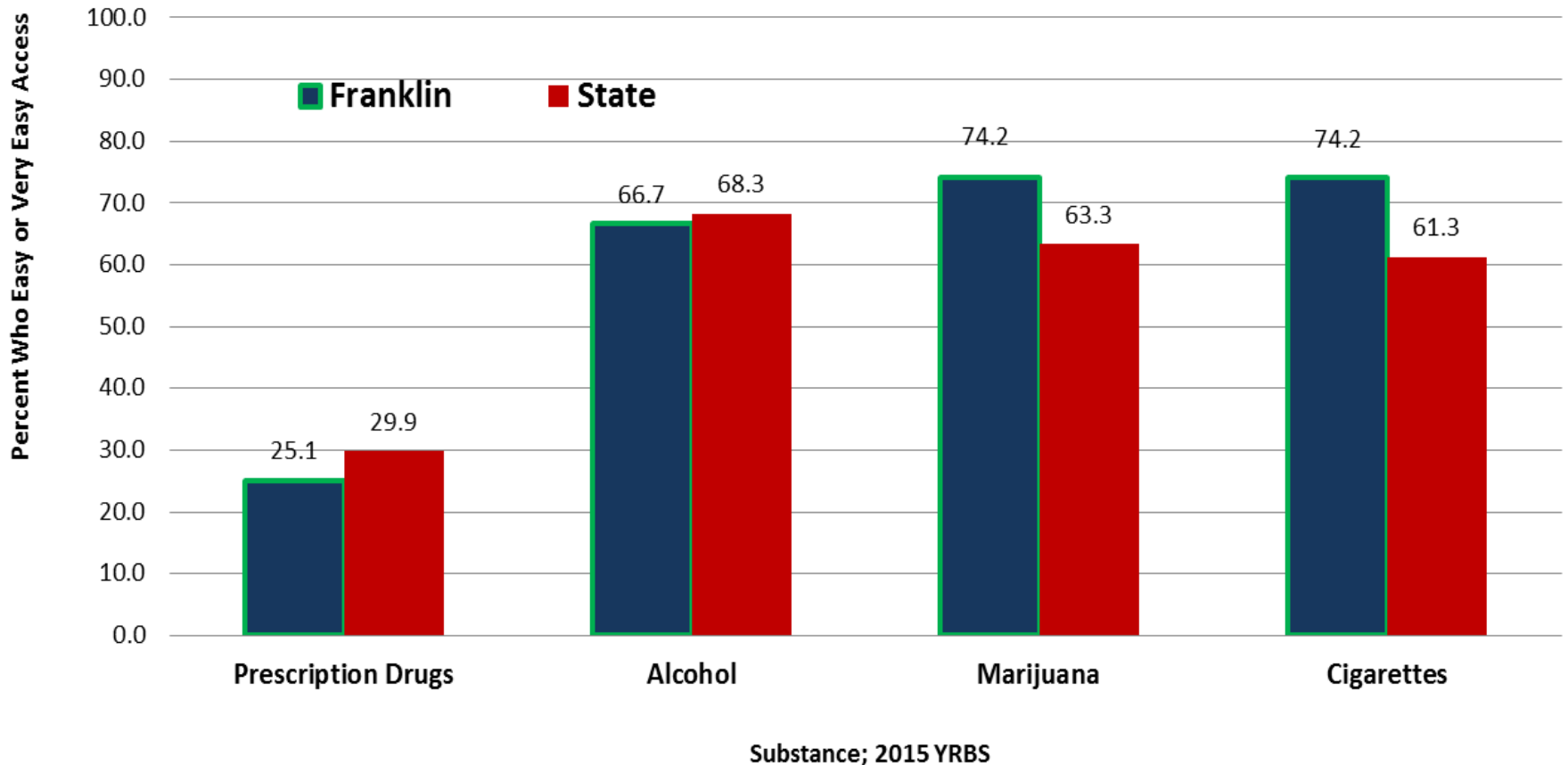




COMMUNITY

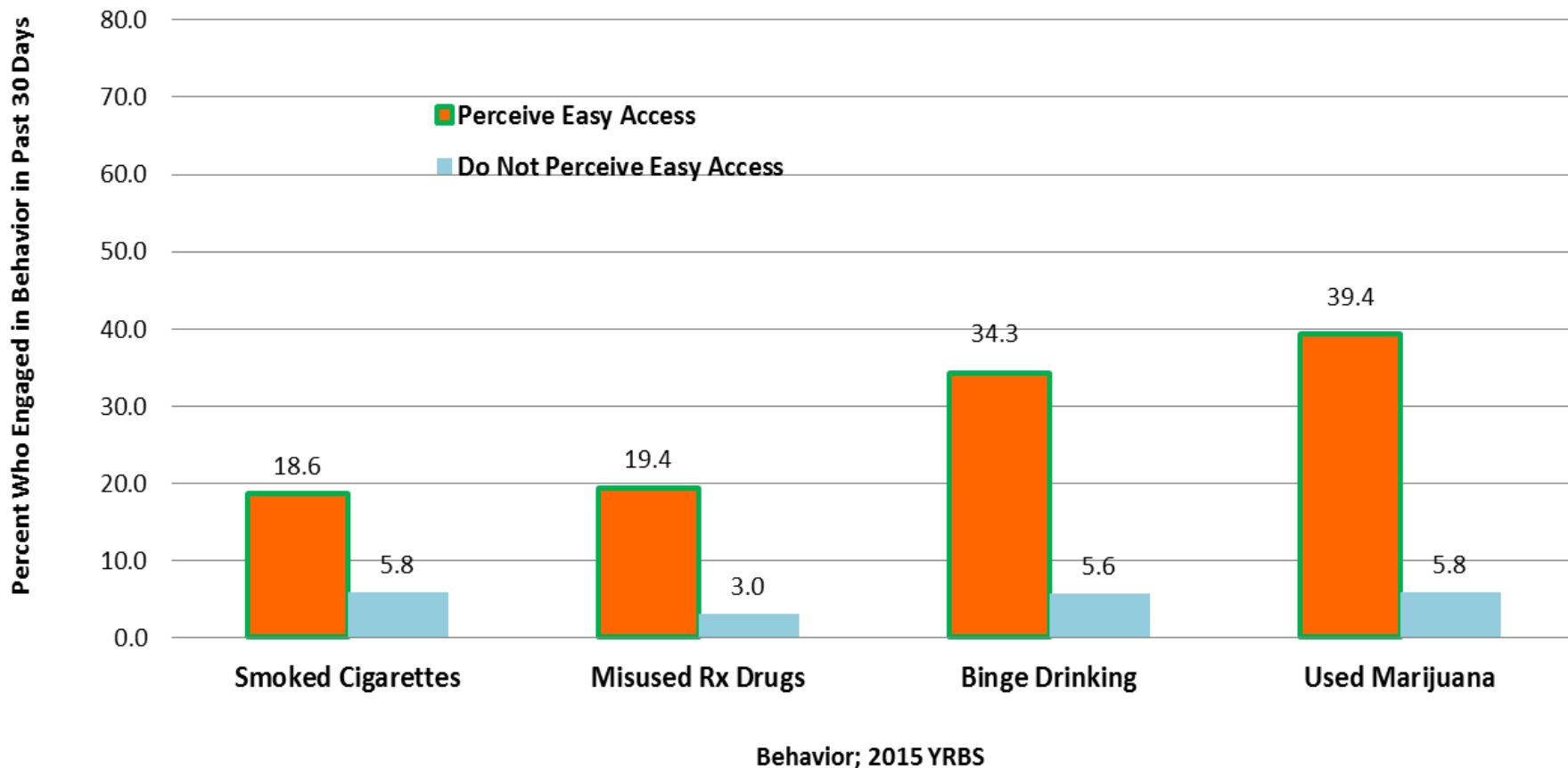
# EASE OF ACCESS 2013-2014

**% of High School Age Youth Who Perceive  
Easy or Very Easy Access to Substances**



# EASE OF ACCESS BY SUBSTANCE USE

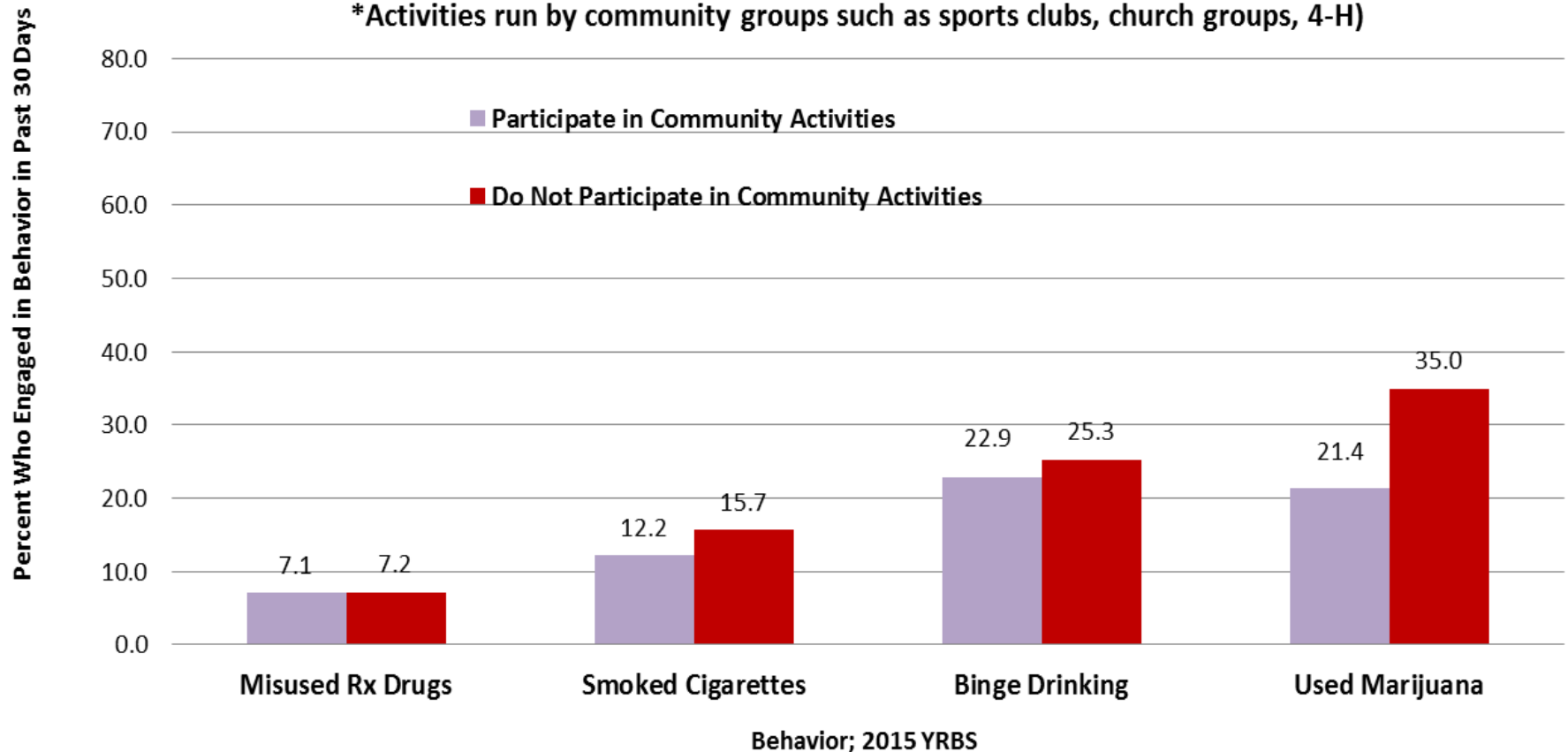
**Relationship Between Perception of Access and Risk Behavior**



# PARTICIPATION IN COMMUNITY ACTIVITIES AND SUBSTANCE USE

## Relationship Between Participation in Community Activities\* and Risk Behavior

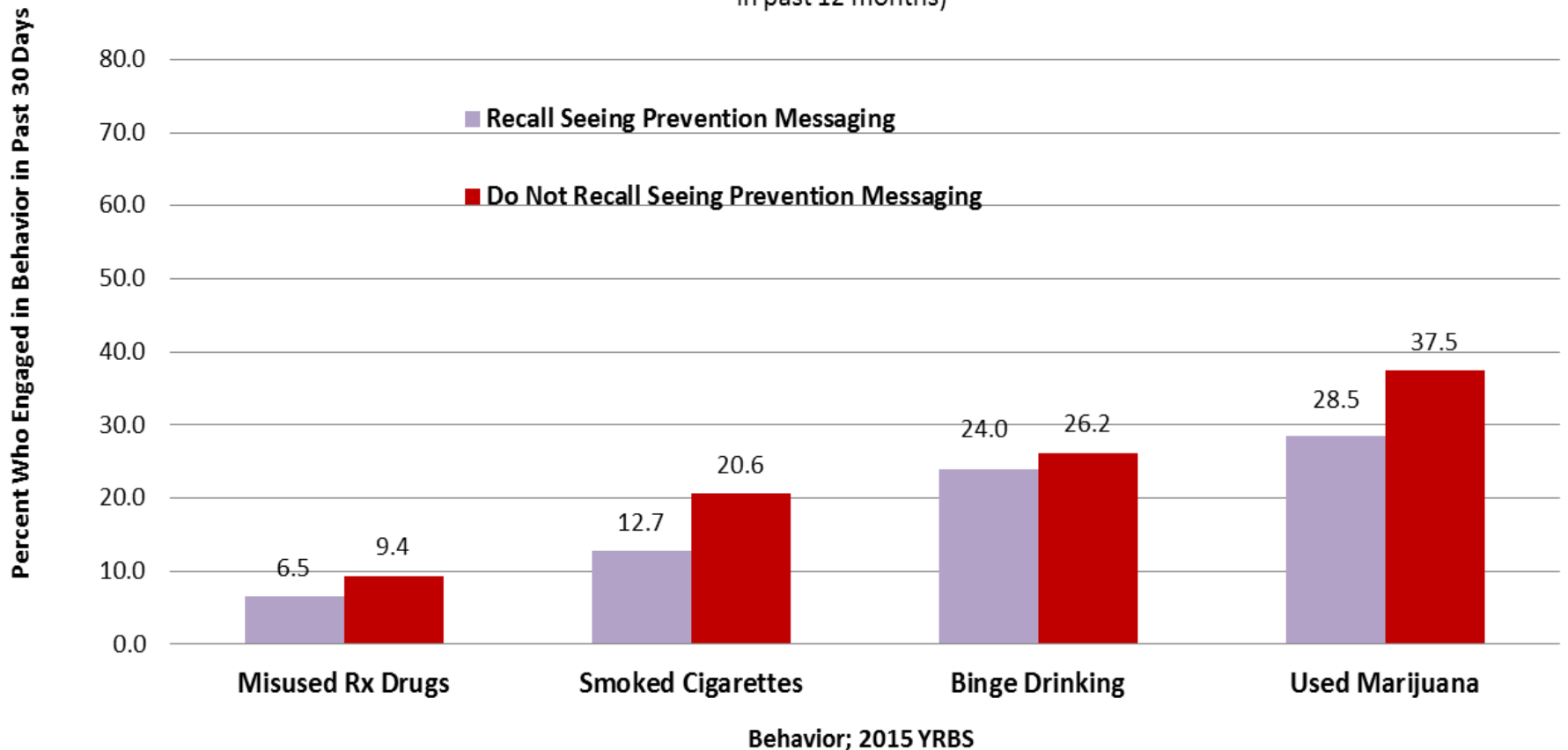
\*Activities run by community groups such as sports clubs, church groups, 4-H)



# RELATIONSHIP BETWEEN PREVENTION MESSAGING AND SUBSTANCE USE

## Relationship Between Prevention Messaging\* and Risk Behavior

(\*Recall hearing, reading, or seeing a public message about avoiding alcohol or other illegal drugs in past 12 months)

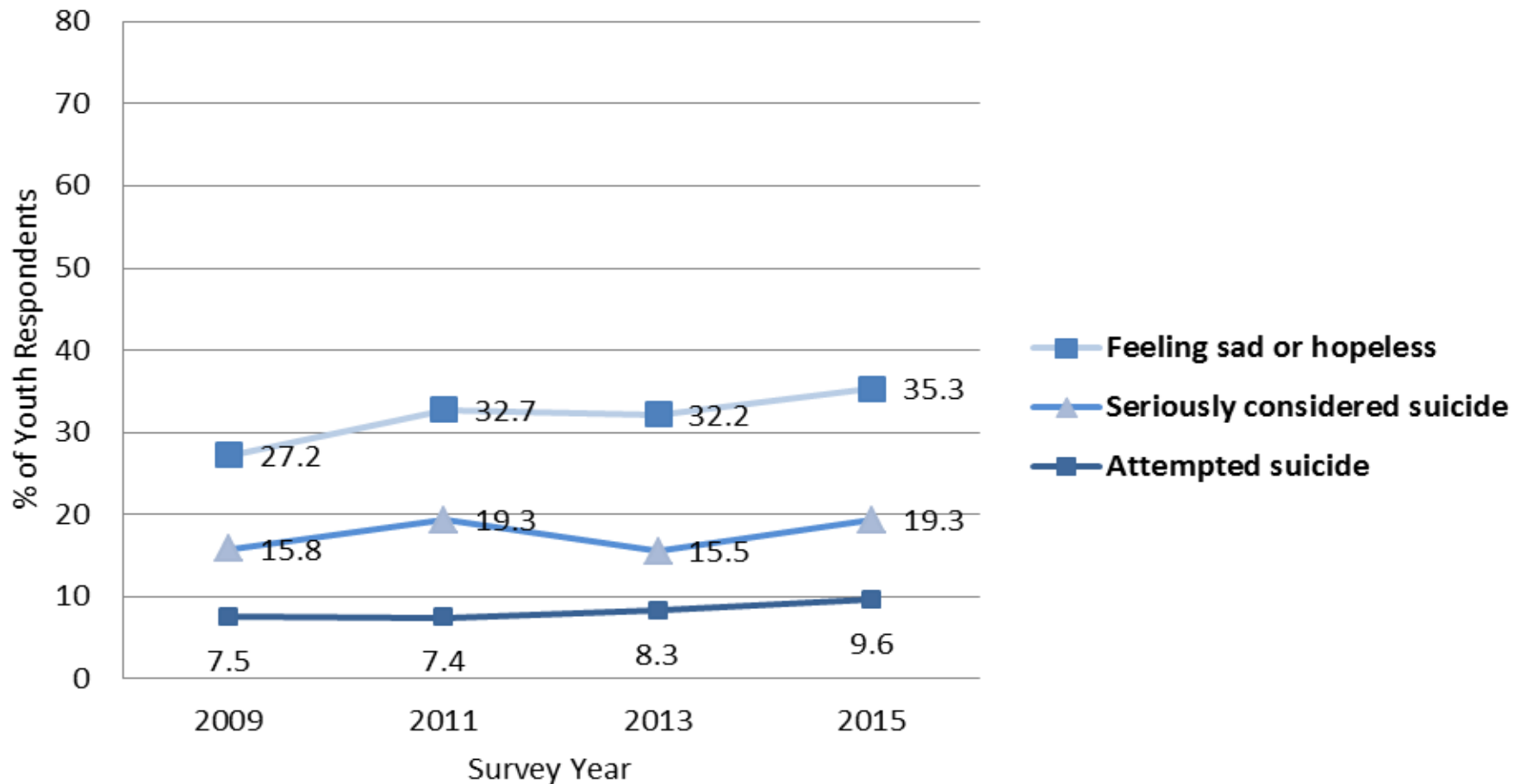


# MENTAL HEALTH INDICATORS AND MULTIPLE RISK BEHAVIOR



# MENTAL HEALTH INDICATORS 2009-2015

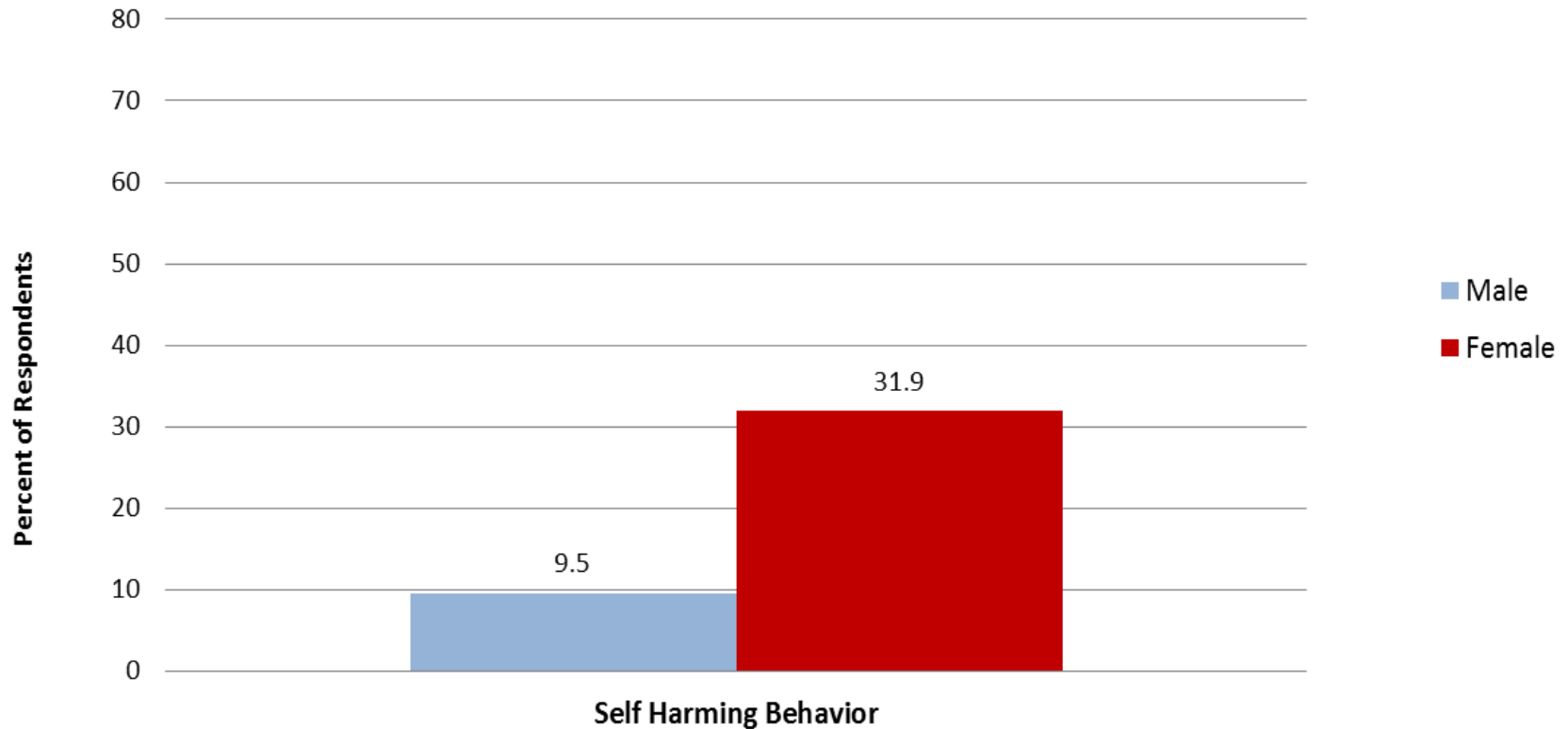
**Percentage of High School Aged Youth Who Reported the Following:**



# SELF HARMING BEHAVIOR

## Reported Self Harming\* Behavior at least once in the past 12 months

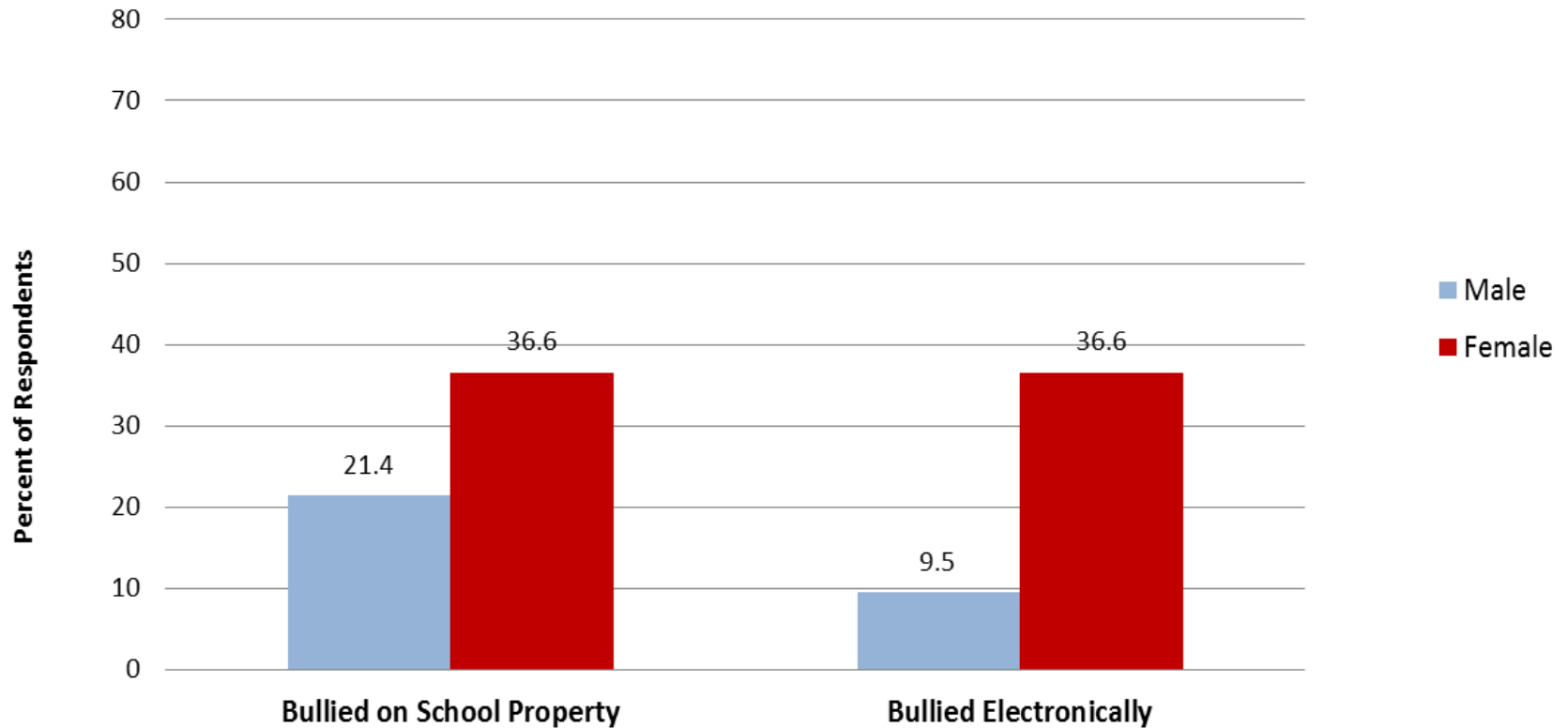
(\*purposely hurt yourself without wanting to die, such as cutting or burning yourself on purpose?)



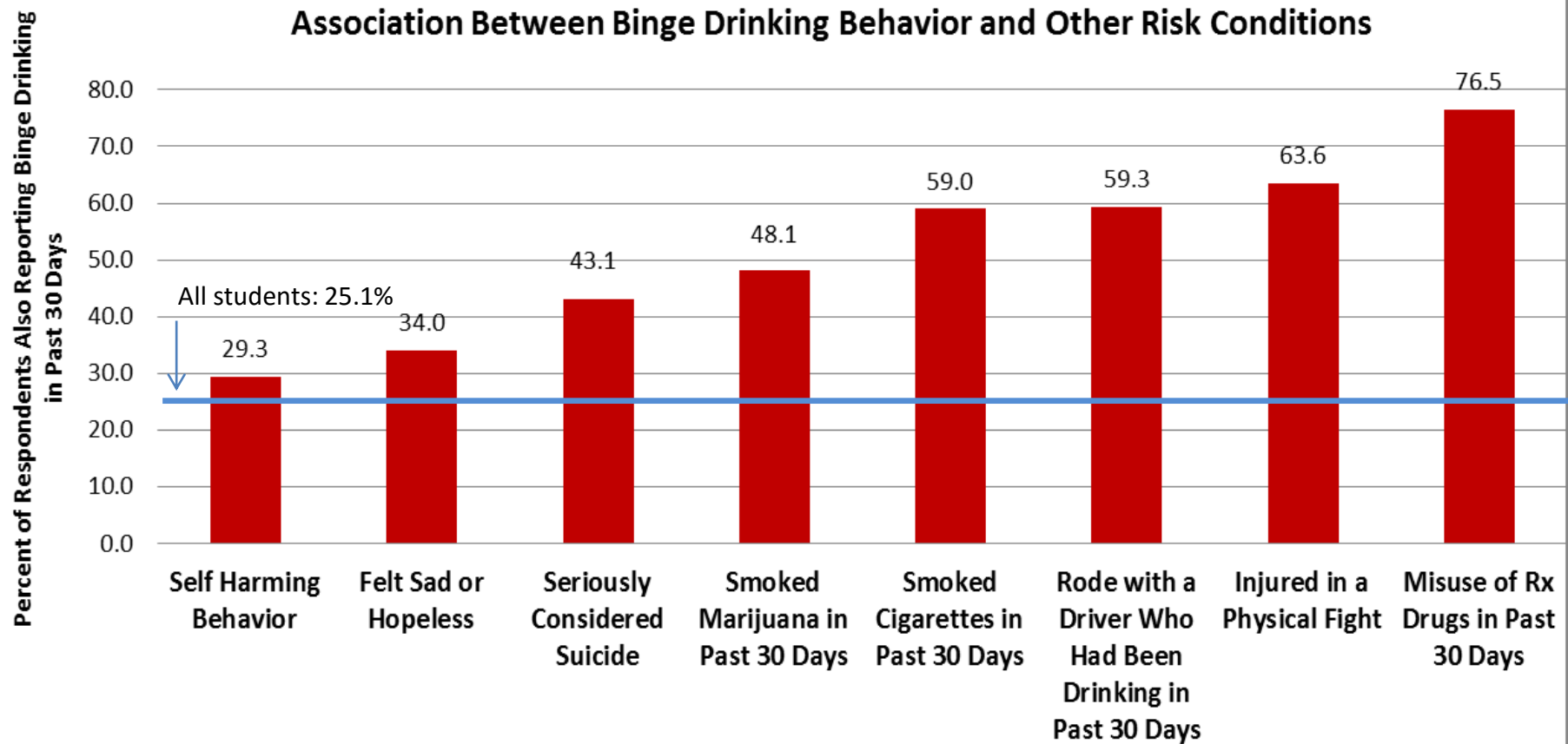


# EXPERIENCED BULLYING

% Reporting Being Bullied in the Past 12 Months



# MULTIPLE RISK BEHAVIORS AND CONDITIONS



Percent of Respondents Reporting the Behavior or Condition Who Also Reported Binge Drinking in the Past 30 days

