

## Improving the Reliability of the Electric System across New Hampshire

### Project Overview

As part of our ongoing investments to deliver reliable energy to our customers and communities, Eversource will be replacing existing wooden pole structures in Franklin, Hill, and New Hampton, N.H. This work will be taking place within the existing right-of-way (power line corridor) of the A111 Line, a 115kV line built in 1951 that is 10 miles long and starts at the Webster Substation in Franklin and terminates at the Pemigewasset Substation in New Hampton. 115 structures will be removed or replaced and fiber optic cable, known as Optical Ground Wire (OPGW) will be installed the length of the line.

### Always Working to Serve You Better

Eversource is making a significant investment in electric infrastructure in order to provide enhanced system reliability for local communities. The new steel structures will be more resilient and less susceptible to woodpecker damage, insect damage or pole rot. The new structures will also have reliability enhancements to protect the system from damage due to severe weather, including floods.



*Example of structure to be installed*

The OPGW that is being installed on this line, and across Eversource's transmission system, enables faster and more reliable communication between Eversource's substations (the communication is not related to any cellular or telecom service). This communication allows for increased visibility of our system, quicker response times for system issues, increased automation, reduces outages and their length, and, overall, improves reliability across the electric system.

### What You Can Expect

We intend to rebuild the line in the same location it is today, with some variations. While structure height increases are unavoidable, we attempted to minimize them wherever possible, while ensuring current electrical standards and safety clearances are met and balancing other important considerations, such as environmental impacts. Overall, major tree removals are not anticipated for construction related activity, though some may be necessary for access in various locations.

### Anticipated Project Schedule

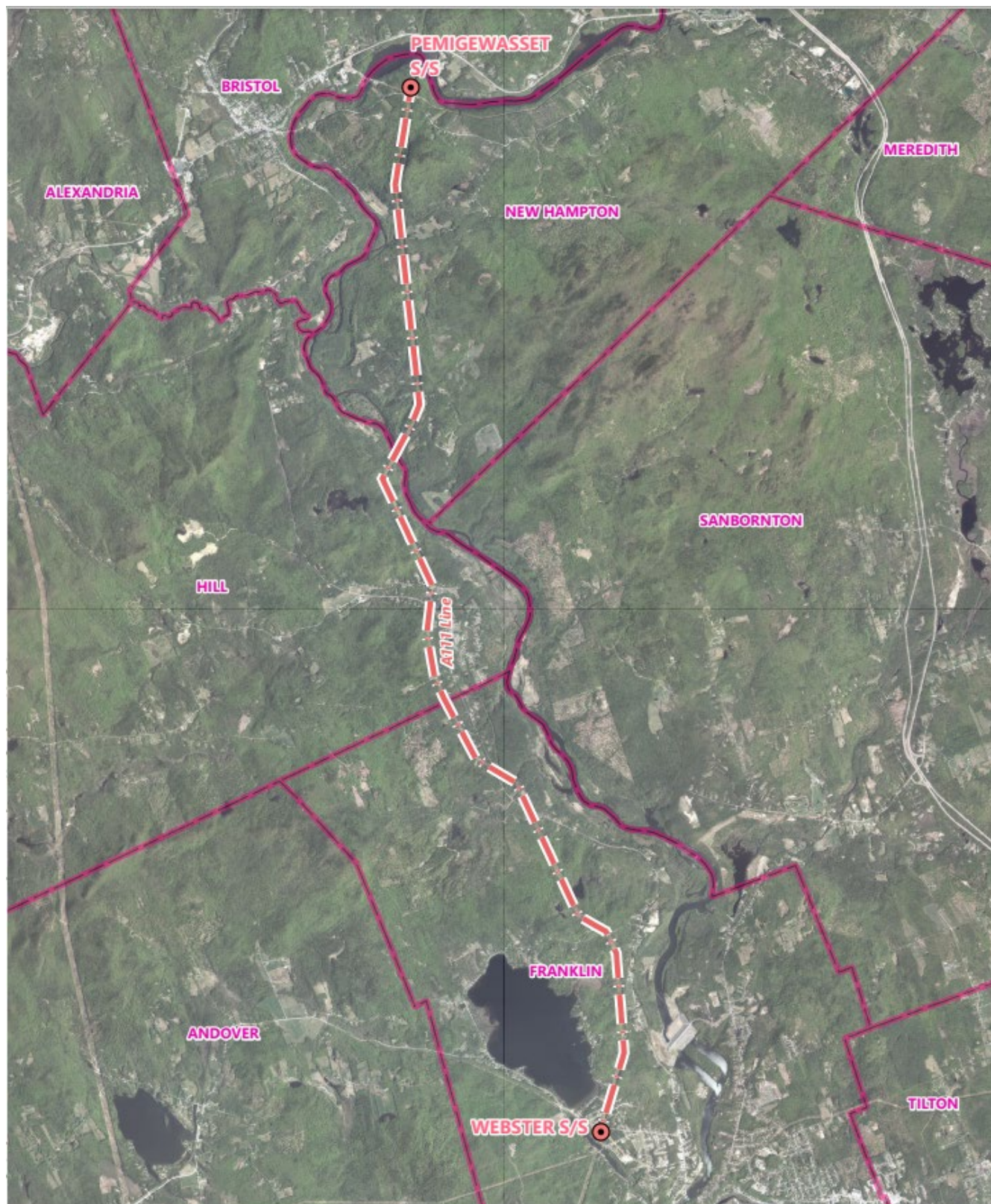
*(schedule is subject to change due to weather or other unexpected circumstances)*

- Local and State Permitting: 2<sup>nd</sup> Quarter 2021
- Construction: 3<sup>rd</sup> Quarter 2021 through 4<sup>th</sup> Quarter 2022
- Site Restoration: 3<sup>rd</sup> and 4<sup>th</sup> Quarter 2022

Project Representatives are available to answer your questions. Please contact us any time.

# Franklin to New Hampton Line Rebuild Project (A111)

EVERSOURCE



*Construction will take place along the red dashed line.*